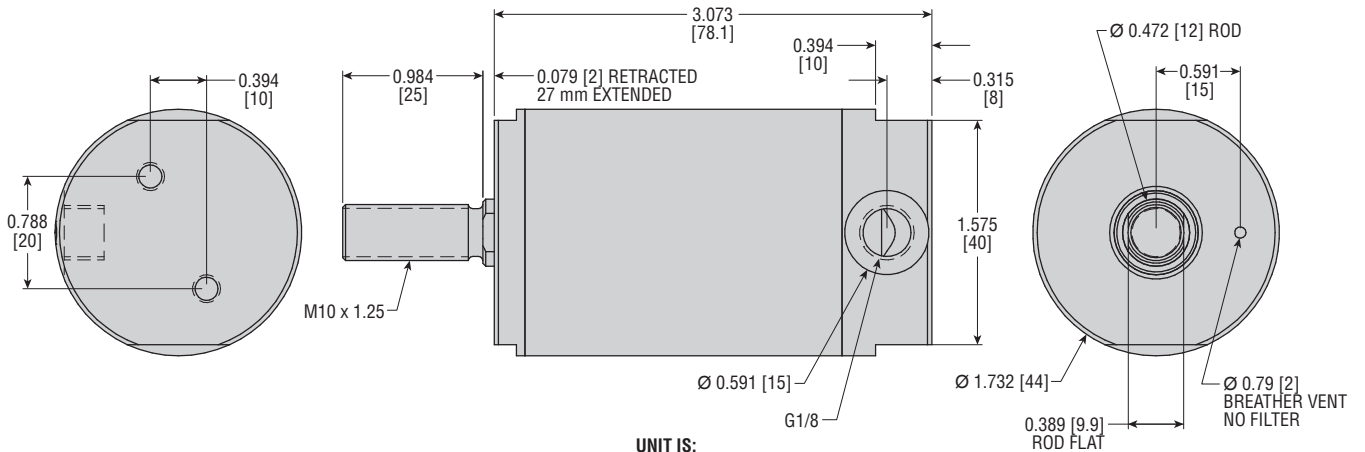


Machine Lift Cylinder

ML314023 - 'K' Style spare component

MAJOR BENEFITS

- Used on 'K' Style volumetric filler machines
- Direct replacement for the previous OEM-supplied Norgren SPC/050198/25
- 40 mm bore x 25 mm stroke
- Food grade seals
- Stainless construction
- Tested for millions of cycles
- Hygienic design for washdown



NOTES:
 1) DIMENSIONS NOT NOTED ARE STANDARD PER UNIT DESCRIPTION
 2) FLATS ON HEAD MAY OR MAY NOT LINE UP WITH FLATS ON CAP

UNIT IS:
 AIR EXTEND
 EXTERNAL MECHANICAL RETRACT

All dimensions are reference only unless specifically tolerated.

2 Position Filler Cylinder

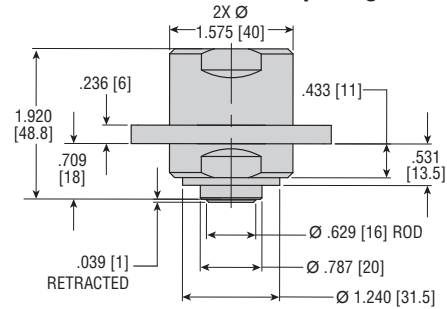
ML312828 - 'K' Style 55 mm Bolt Spacing
 ML313378 - 'K' Style 60 mm Bolt Spacing

MAJOR BENEFITS

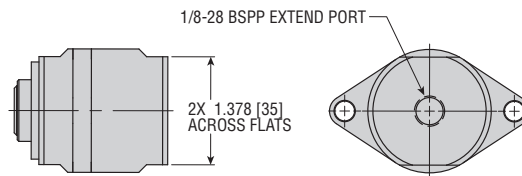
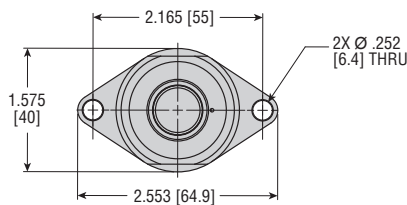
- Reliable, field-tested design provides consistent performance
- Replaces failure-prone diaphragm with simple piston design for superior operation
- Round design more hygienic/cleaner, for easy washdown
- Passivated stainless steel for food and beverage industry
- Spare component for certain 'K' Style filler valves requires no modifications to implement this product
- Lubricant free
- Food grade seals



ML312828 - 55 mm Bolt Spacing

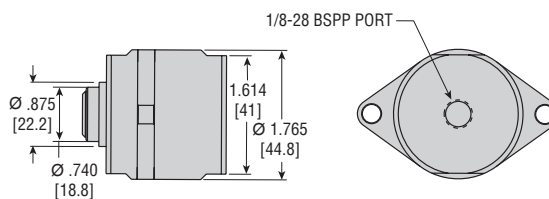
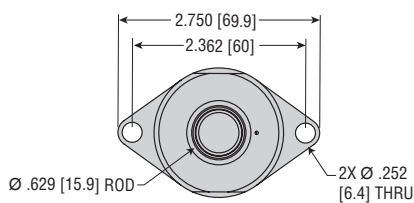
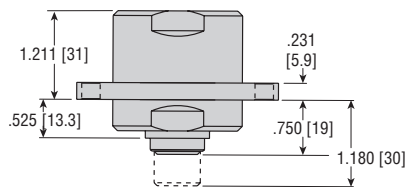


SPECIFICATIONS	ML312828	ML313378
STROKE	0.414 in [10.5]	0.430 in [10.9]
BORE	1 in [25.4]	1-1/4 in [31.8]
COMPONENTS	300 Series Stainless Steel	300 Series Stainless Steel
PISTON SEAL	Fluoroelastomer	Fluoroelastomer
BUSHING	Composite	Composite
CAP SEAL	PTFE	PTFE



NOTES:
 1) DIMENSIONS IN [] ARE mm
 2) UNIT FEATURES:
 - 1.000 [25.4] BORE
 - STROKE = 0.414 ±0.020 [10.5 ±0.5]
 3) THIS UNIT USES NO LUBRICATION

ML313378 - 60 mm Bolt Spacing



NOTES:
 1) DIMENSIONS IN [] ARE mm
 2) UNIT FEATURES:
 - 1.000 [25.4] BORE
 - STROKE = 0.414 ±0.020 [10.5 ±0.5]
 3) THIS UNIT USES NO LUBRICATION

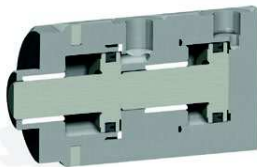
All dimensions are reference only unless specifically toleranced.

Series FCB Filler Cylinder

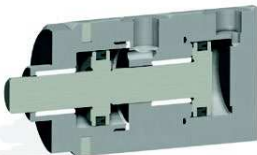
ML314051 - 'K' Style 45 40152 and 45 40156
 ML314569 - 'K' Style 45 40150
 ML314570 - 'K' Style 45 40155 and 45 40153

MAJOR BENEFITS

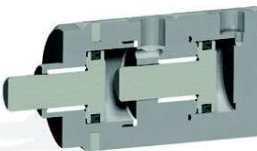
- Reliable, field-tested design provides consistent performance
- Replaces failure-prone diaphragm with simple piston design for superior operation
- Round design more hygienic/cleaner, for easy washdown
- Passivated stainless steel for food and beverage industry
- Spare component for certain 'K' Style filler valves requires no modifications to implement this product
- Lubricant free
- Food grade seals
- Reduced air volume for additional savings



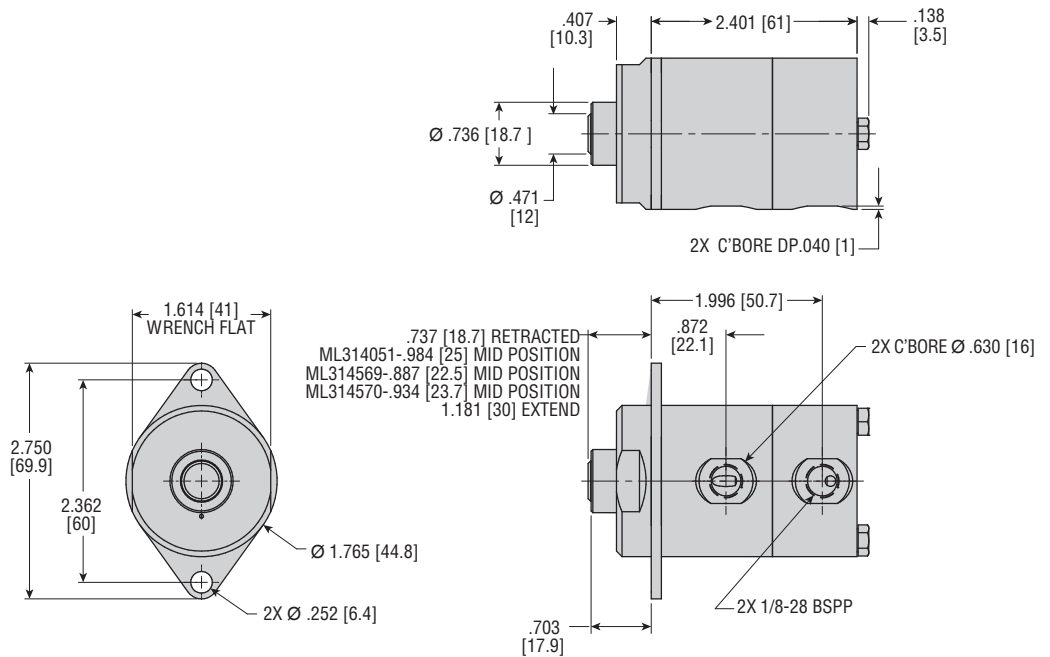
Full Retract



Mid Position



Full Extend



All dimensions are reference only unless specifically tolerated.